

FONTANA
INFINITY

FLOOR PLANS



SUMMARY

Name of Development	Fontana Infinity
Location	Juffair (Prince Saud AlFaisal Highway)
No. of Storeys	44 & 45 Levels
Types of Storey	Ground Floor, Mezzanin, 4 Carpark Floors, 2 Amenities Floors
No. of Units	856 Apartments
No. of Car Parks.....	871 Carparks
Ground Breaking Date.....	September 2016
Expected Handover Date	March 2020
Services charge.....	0.800 BHD per m2 per month
Developers.....	Kooheji Properties
Lead Contractor	Kooheji Contractors
Property Manager	Royal Ambassador

AMENITIES

Tropical Oasis	Entertainment Halls	Spa Resort
Calm Lazy River	Club House	Marketplace
Aquatic Theme Park	Business Centre	Jogging Track
Kids Play Area	Fitness Centre	Artificial Beach



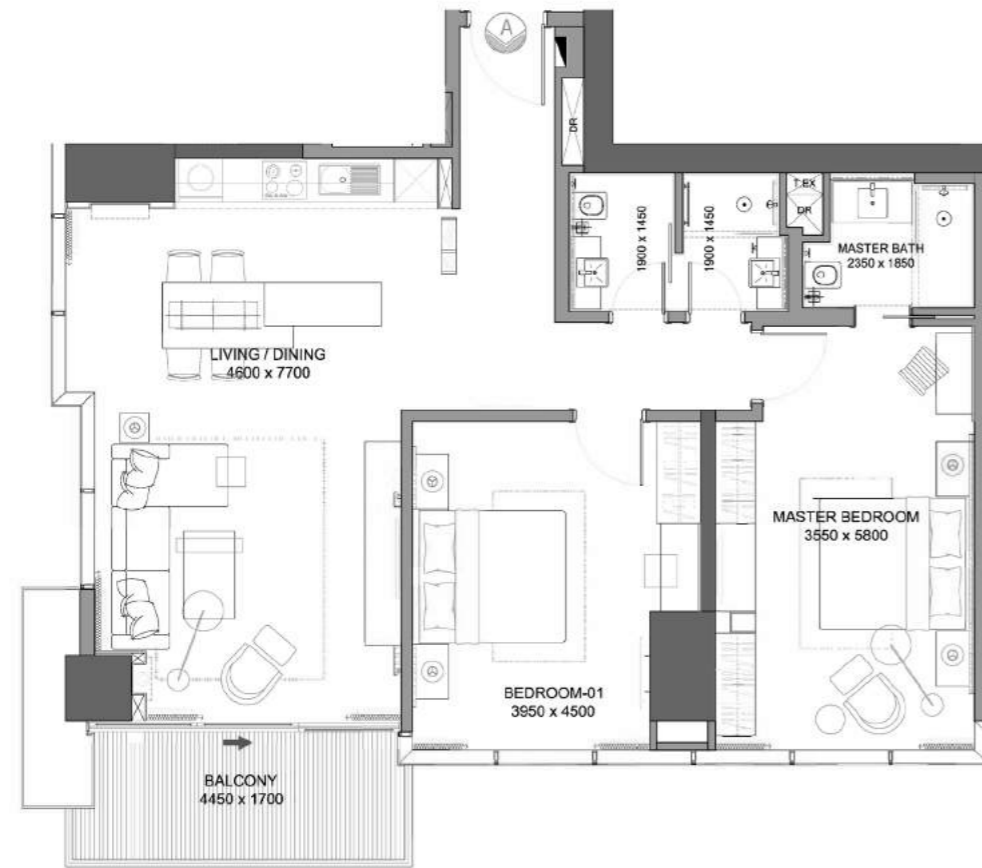
RELAX BY
THE POOLSIDE
GARDENS



LUXURY & COMFORT

TYPE A

Double bedroom apartment 'A'

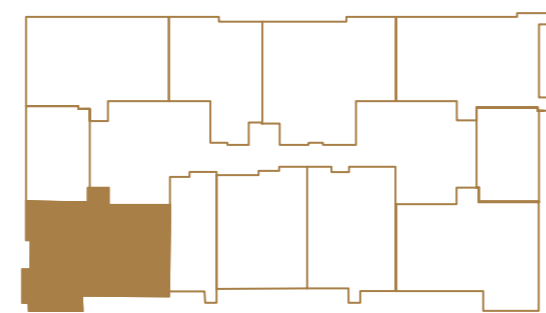
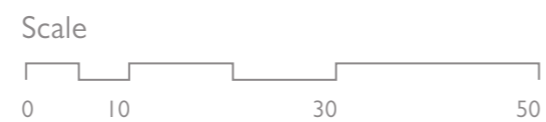


Total built-up area 114.6 m²
 Balcony area 8.2 m²

APPROXIMATE APPARTMENT SIZE (mm)

Dining & Kitchen	4600 x 7700
Bedroom 1	3950 x 4500
Master Bath	2350 x 1850
Bedroom 2	3550 x 5800
Bath 2	1900 x 1450
Toilet	1900 x 1450

KEYPLAN



COMFORT WITH FINESSE





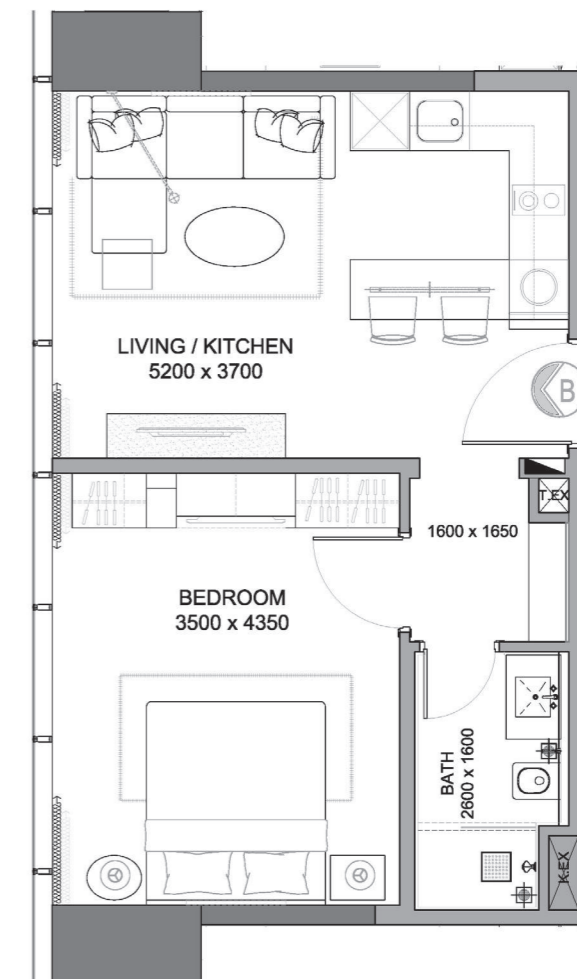
YOUR PROPERTY
AND ITS INFINITE
POSSIBILITIES

LIVE IN
ABSOLUTE
COMFORT
& INFINITE
DELIGHT



TYPE B

Single bedroom apartment 'B'

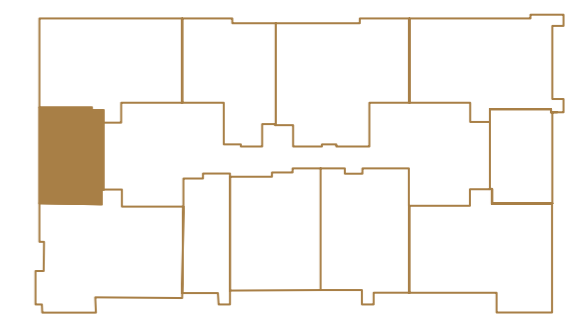
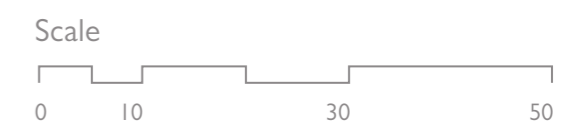


Total built-up area 46.8 m²
Balcony area N/A

KEYPLAN

APPROXIMATE APPARTMENT SIZE (mm)

Living, Dining & Kitchen 3700 x 5200
Bedroom 4350 x 3500
Bath 2600 x 1600

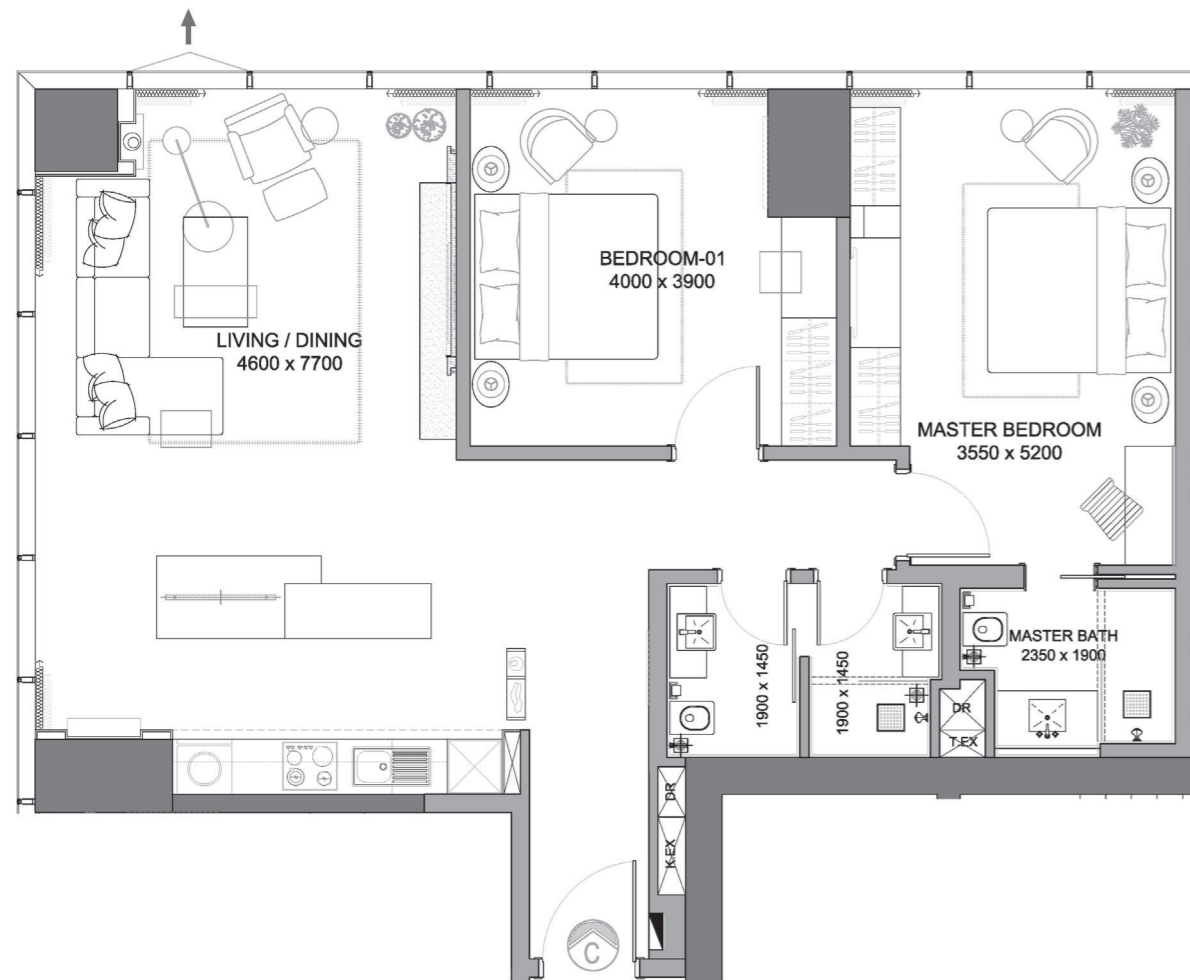


COMMUNITY, CAFES & NEIGHBORS



TYPE C

Double bedroom apartment 'C'

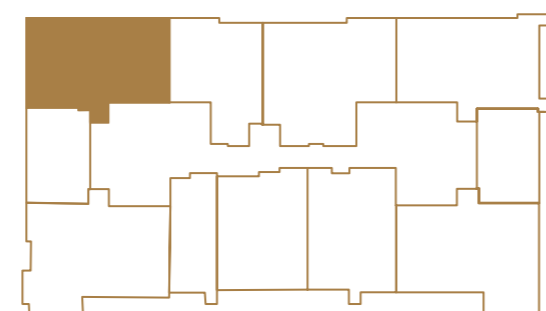
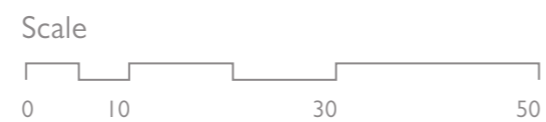


Total built-up area 103 m²
Balcony area N/A

APPROXIMATE APPARTMENT SIZE (mm)

Living, Dining & Kitchen 4600 x 7700
Bedroom 1 4000 x 3900
Bath 1 2350 x 1900
Bedroom 2 3550 x 5200
Bath 2 1900 x 1450
Toilet 1900 x 1450

KEYPLAN





FUN & GAMES
FOR ALL THE FAMILY

ROOM FOR LIVING & LOUNGING



TYPE D

Single bedroom apartment 'D'



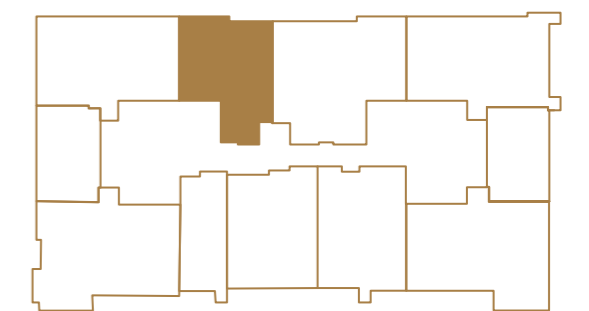
Total built-up area 76.5 m²
Balcony area 5.2 m²

KEYPLAN

APPROXIMATE APPARTMENT SIZE (mm)

Living, Dining & Kitchen 3900 x 7450
Bedroom 4000 x 4250
Bath 2000 x 2450
Toilet 1800 x 1400

Scale

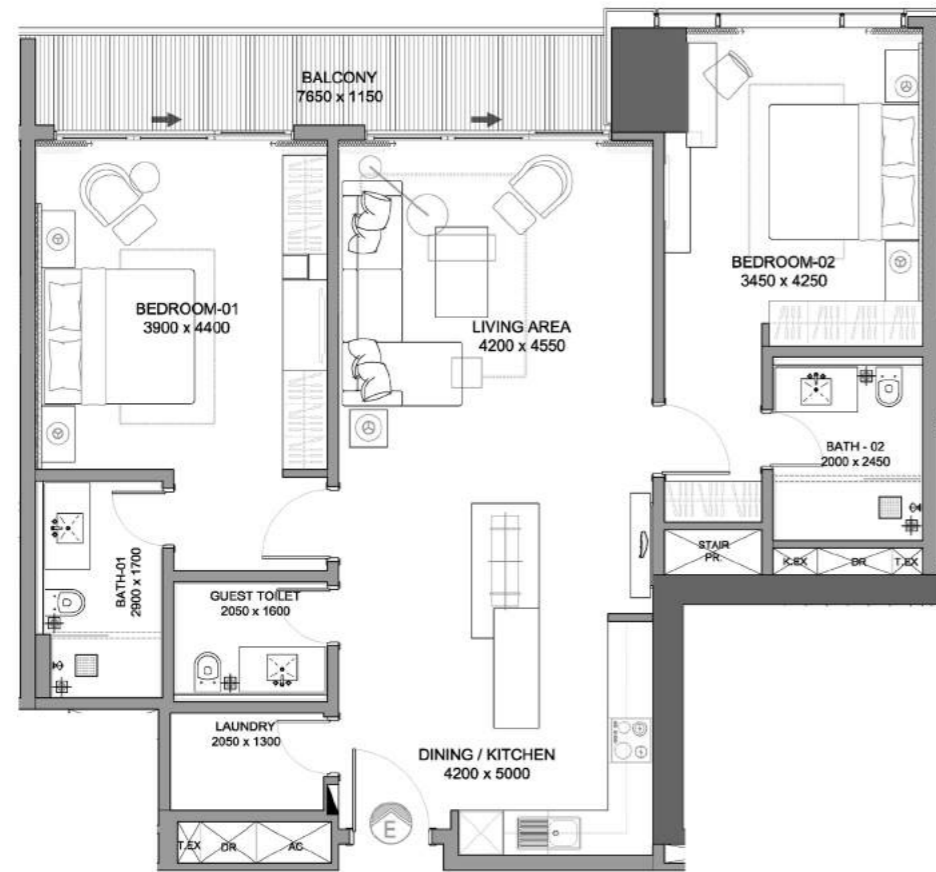


PRAYER ROOM, REFINED AMENITIES



TYPE E

Double bedroom apartment 'E'

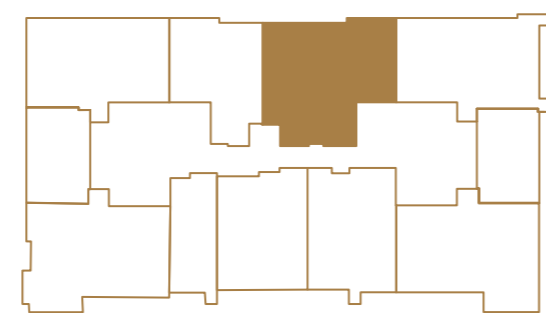
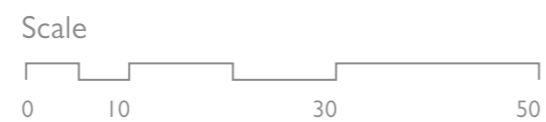


Total built-up area 117.5 m²
 Balcony area 10.1 m²

APPROXIMATE APPARTMENT SIZE (mm)

Living Area	4200 x 4550
Bedroom 1	3900 x 4400
Bath 1	2900 x 1700
Bedroom 2	3450 x 4250
Bath 2	2000 x 2450
Kitchen	4200 x 5000
Toilet	2050 x 1600
Store.....	2050 x 1300

KEYPLAN





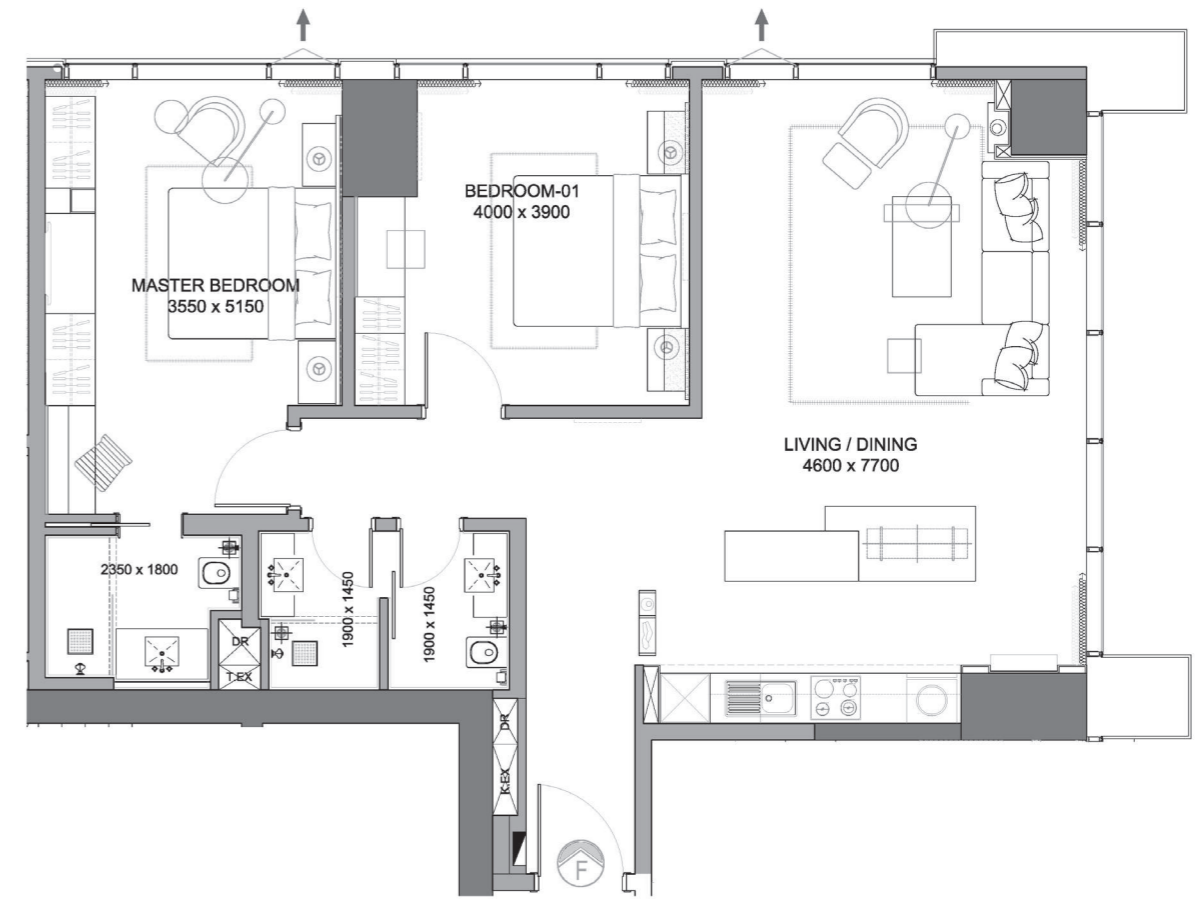
WORLD CLASS GYM
& SPA FACILITIES



KITCHENS
CRAFTED
WITH FINESSE

TYPE F

Double bedroom apartment 'F'



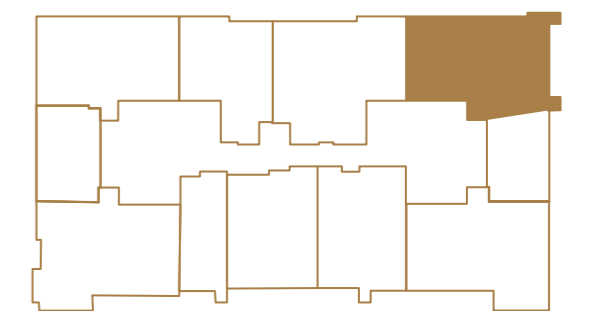
Total built-up area 104 m²
Balcony area N/A

KEYPLAN

APPROXIMATE APARTMENT SIZE (mm)

Living, Dining & Kitchen	4600 x 7700
Bedroom 1	4000 x 3900
Bath 1	2350 x 1800
Bedroom 2	3550 x 5150
Bath 2	1900 x 1450
Toilet	1900 x 1450

Scale

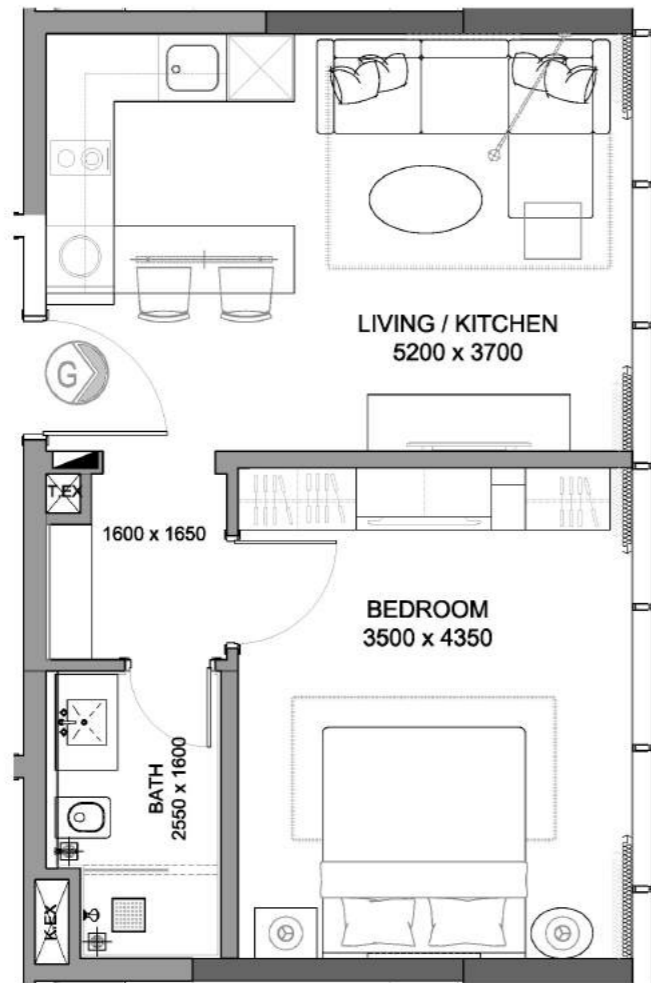




UNIQUE INDOOR
SWIMMING POOL

TYPE G

Single bedroom apartment 'G'

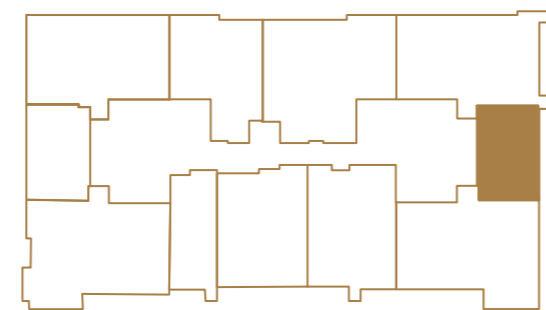
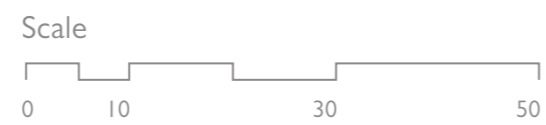


Total built-up area 46.80 m²
Balcony area N/A

KEYPLAN

APPROXIMATE APPARTMENT SIZE (mm)

Living, Dining & Kitchen 3700 x 5200
Bedroom 4350 x 3500
Bath 2550 x 1600



INFINITE COMFORT



WORLD CLASS SPA FACILITIES

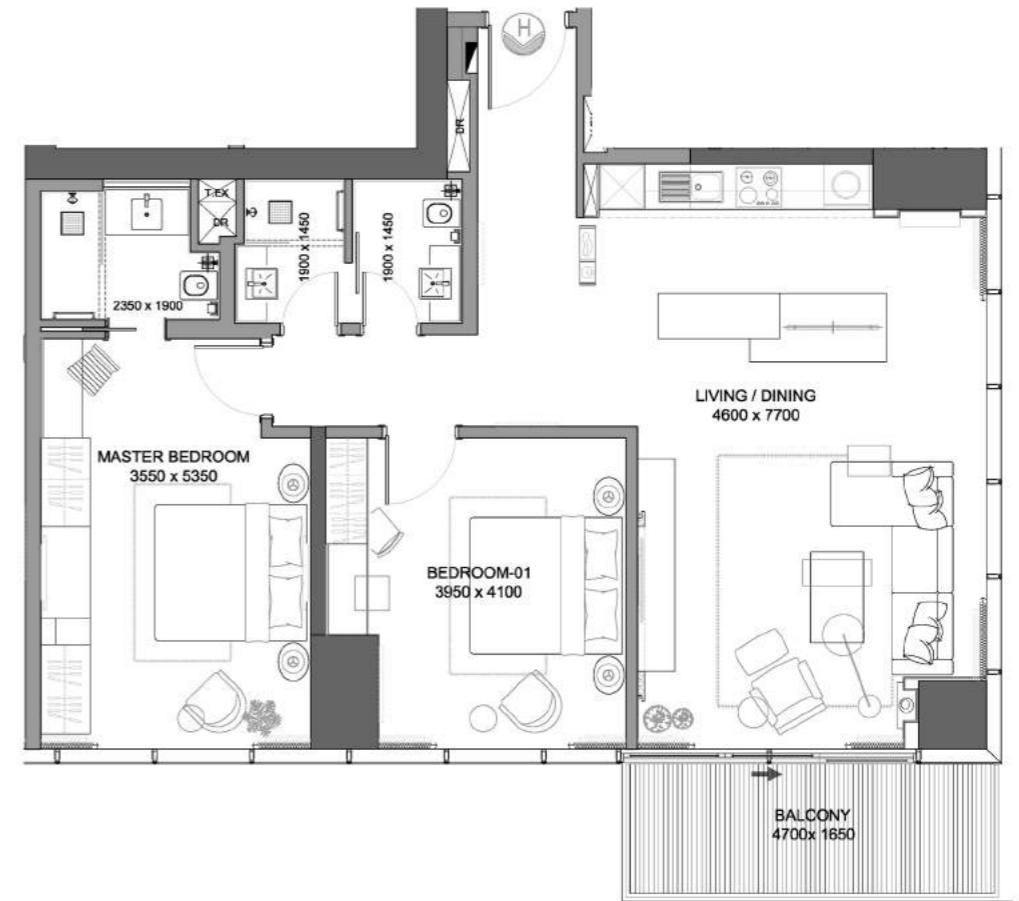




LIVE IN
ABSOLUTE
COMFORT

TYPE H

Double bedroom apartment 'H'

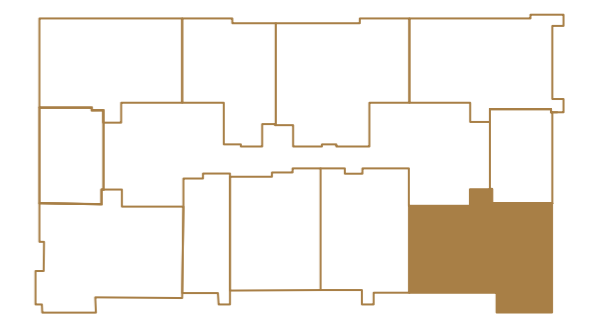
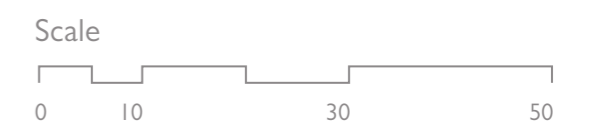


Total built-up area 111 m²
Balcony area 8.9 m²

KEYPLAN

APPROXIMATE APPARTMENT SIZE (mm)

Living, Dining & Kitchen	4600 x 7700
Bedroom I	3950 x 4100
Bath I	2350 x 1900
Bedroom 2	3550 x 5350
Bath 2	1900 x 1450
Toilet	1900 x 1450

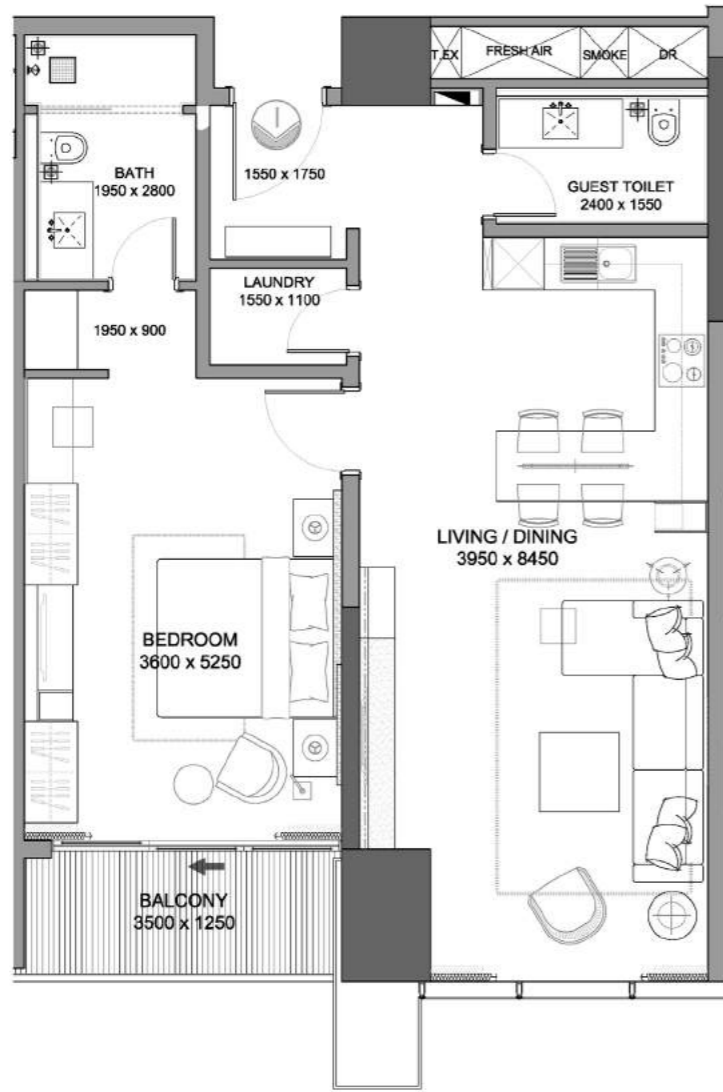




A CLUB HOUSE
FOR ENTERTAINING

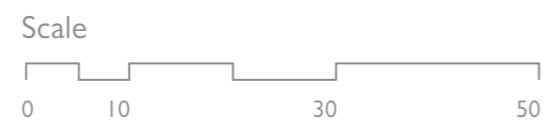
TYPE I

Single bedroom apartment 'I'



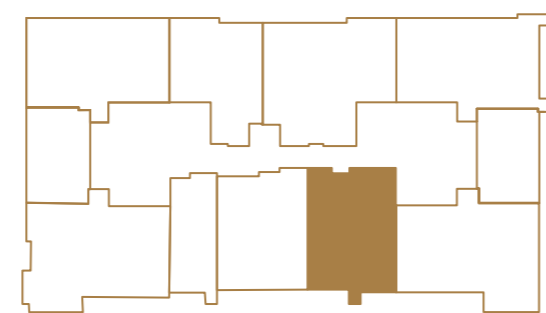
Total built-up area 87.6 m²
Balcony area 5.4 m²

KEYPLAN



APPROXIMATE APPARTMENT SIZE (mm)

Living, Dining & Kitchen 3950 x 8450
Bedroom 3600 x 5250
Bath 1950 x 2800
Toilet 2400 x 1550
Store 1550 x 1100



KITCHENS
CRAFTED
WITH FINESSE



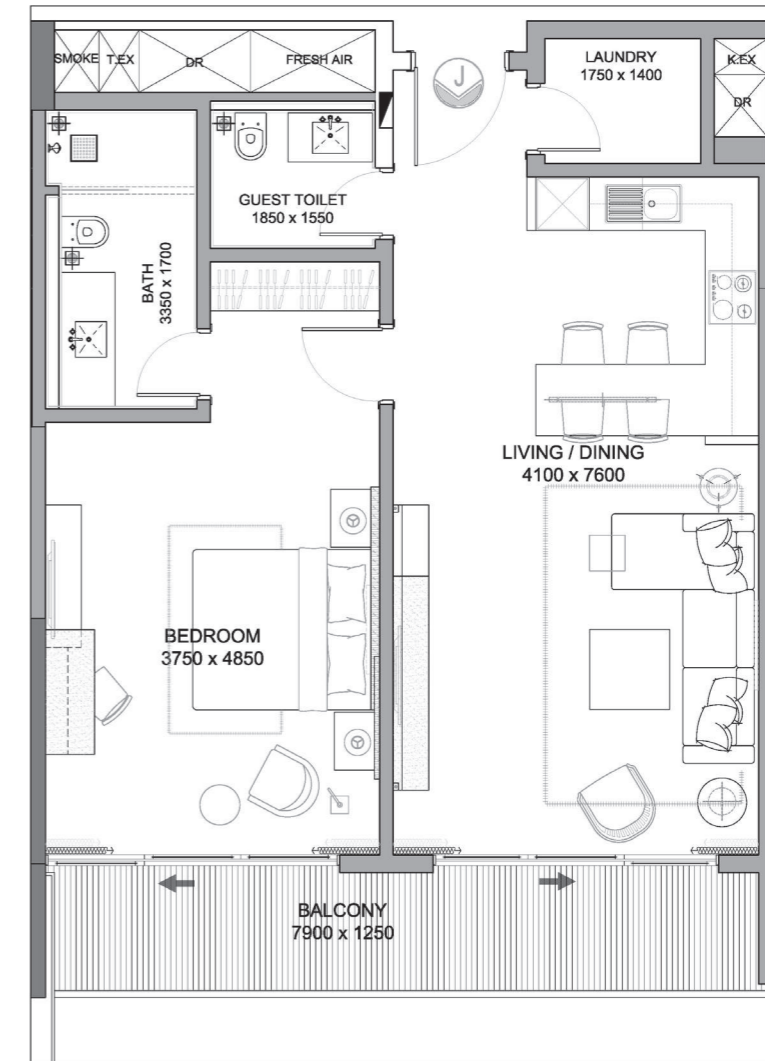
WORLD CLASS
RESORT AMENITIES

BEDROOMS THAT SETTLE THE BODY



TYPE J

Single bedroom apartment 'J'



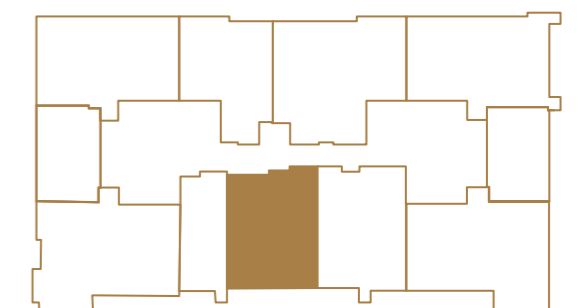
Total built-up area 85.5 m²
Balcony area 11.7 m²

KEYPLAN

APPROXIMATE APARTMENT SIZE (mm)

Living, Dining & Kitchen 4100 x 7600
Bedroom 3750 x 4850
Bath 3350 x 1700
Toilet 1850 x 1550
Store 1750 x 1400

Scale



A vibrant, high-quality architectural rendering of a resort pool area. The scene is dominated by a large, curved swimming pool with a lazy river section. In the foreground, a man sits on a purple mat on a grassy bank, talking to another man who is lying on a blue mat. The pool features several decorative water jets, including a large circular fountain with two arched jets and a smaller jet with a white spherical float. People are seen relaxing in the pool under white umbrellas. The background shows a modern building with large glass windows and several tall palm trees under a bright blue sky with light clouds.

FLOAT AWAY ON A
UNIQUE LAZY RIVER

TYPE K

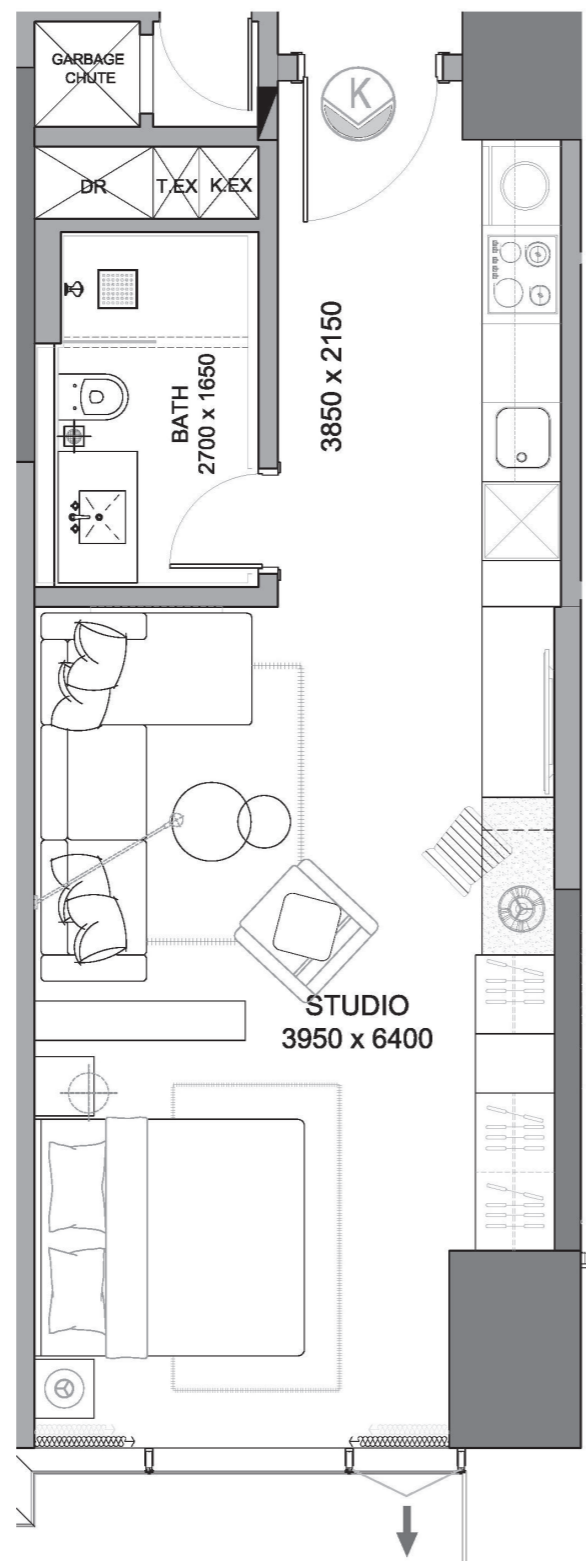
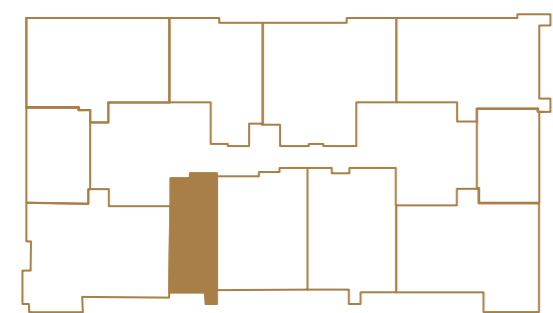
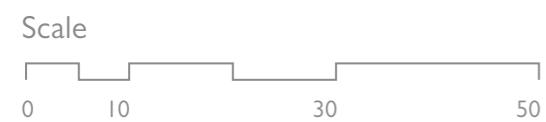
Studio apartment 'K'

KEYPLAN

Total built-up area44.75 m²
Balcony area N/A

APPROXIMATE APARTMENT SIZE (mm)

Bedroom 3950 x 6400
Bath 1650 x 2700





Building 4686, Road 2468, Juffair 324, Bahrain
Phone: (+973) 1600 0061
www.royalambassadorbh.com

