



TOWER A

FONTANA
INFINITY

TOWER B FLOOR PLANS

TOWER B



FONTANA
INFINITY

WELCOME TO
INFINITY

SUMMARY

Name of Development	Fontana Infinity
Location	Juffair (Prince Saud AlFaisal Highway)
No. of Storeys	46 Levels
Types of Storey	Ground Floor, Mezzanine, 4 Carpark Floors, 2 Amenities Floors
No. of Units	856 Apartments
No. of Car Parks	871 Carparks
Services charge	0.800 BHD per m2 per month
Developers	Fontana Real Estate
Lead Contractor	Kooheji Contractors
Property Manager	Royal Ambassador

ملخص

اسم المشروع	فونتانا إنفينيتي
الموقع	الجفير (شارع الأمير سعود الفيصل)
عدد الطوابق	46 طابق
أنواع الطوابق	طابق أرضي، ميزانين، 4 طوابق لمواقف السيارات، طابقين للمرافق
عدد الوحدات	856 شقة
عدد مواقف السيارات	871 موقفاً للسيارات
رسوم الخدمة	800,0 د.ب لكل متر مربع شهرياً
المطورون	شركة فونتانا العقارية
المقاول الرئيسي	شركة الكوهجي للمقاولات
إدارة المشروع	شركة رويال أمباسادور

AMENITIES

المرافق الخدمائية

 24/7 Reception, Security & Maintenance استقبال، أمن، وصيانة على مدار الساعة طول الأسبوع	 Housekeeping خدمة التنظيف	 Secured Parking مواقف سيارات آمنة	 Indoor Swimming Pool بركة سباحة داخلية	 Cinema Hall قاعة سينما	 Multipurpose Hall قاعة متعددة الاستخدامات
 Indoor and outdoor play areas منطقة ألعاب داخلية وخارجية	 Outdoor Pool مسبح خارجي	 Tropical Oasis واحة استوائية	 Gaming Room غرفة للألعاب	 BBQ Area منطقة للشواء	 Steam & Sauna بخار وسونا
 Multi Sports Hall صالة متعددة الألعاب	 Gym نادي صحي	 Wi-Fi واي فاي			

UNIQUE SETTING FOR TODAY'S MODERN FAMILY



TYPE A

Two bedrooms apartment 'A'



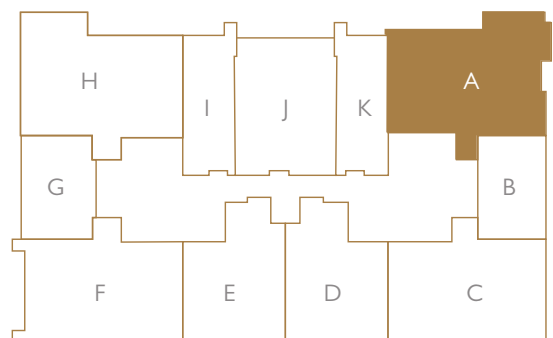
Total built-up area 114.6 m²
 Balcony area 8.2 m²

KEYPLAN

APPROXIMATE APARTMENT SIZE (mm)

Dining & Kitchen	4600 x 7700
Bedroom 1	3950 x 4500
Bath 1	1900 x 1450
Bedroom 2	3550 x 5800
Bath 2	2350 x 1850
Toilet	1900 x 1450

Scale

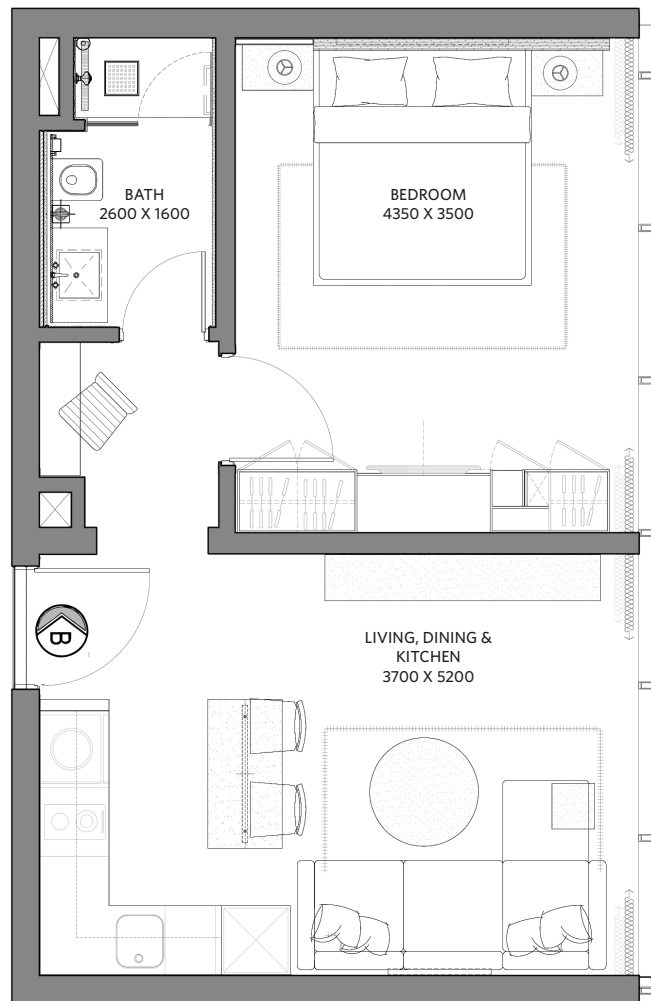


SPACES DESIGNED
FOR YOUR EVERYDAY
COMFORT



TYPE B

One bedroom apartment 'B'



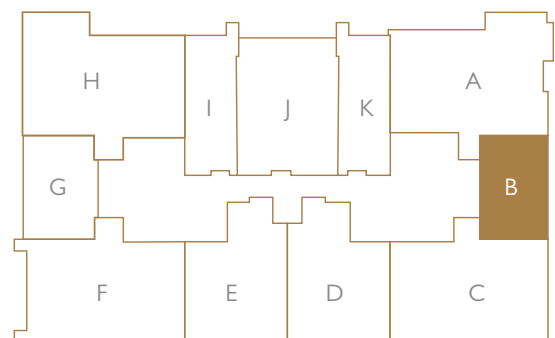
Total built-up area 46.8 m²
 Balcony area N/A

KEYPLAN

APPROXIMATE APARTMENT SIZE (mm)

Living, Dining & Kitchen 3700 x 5200
 Bedroom 4350 x 3500
 Bath 2600 x 1600

Scale

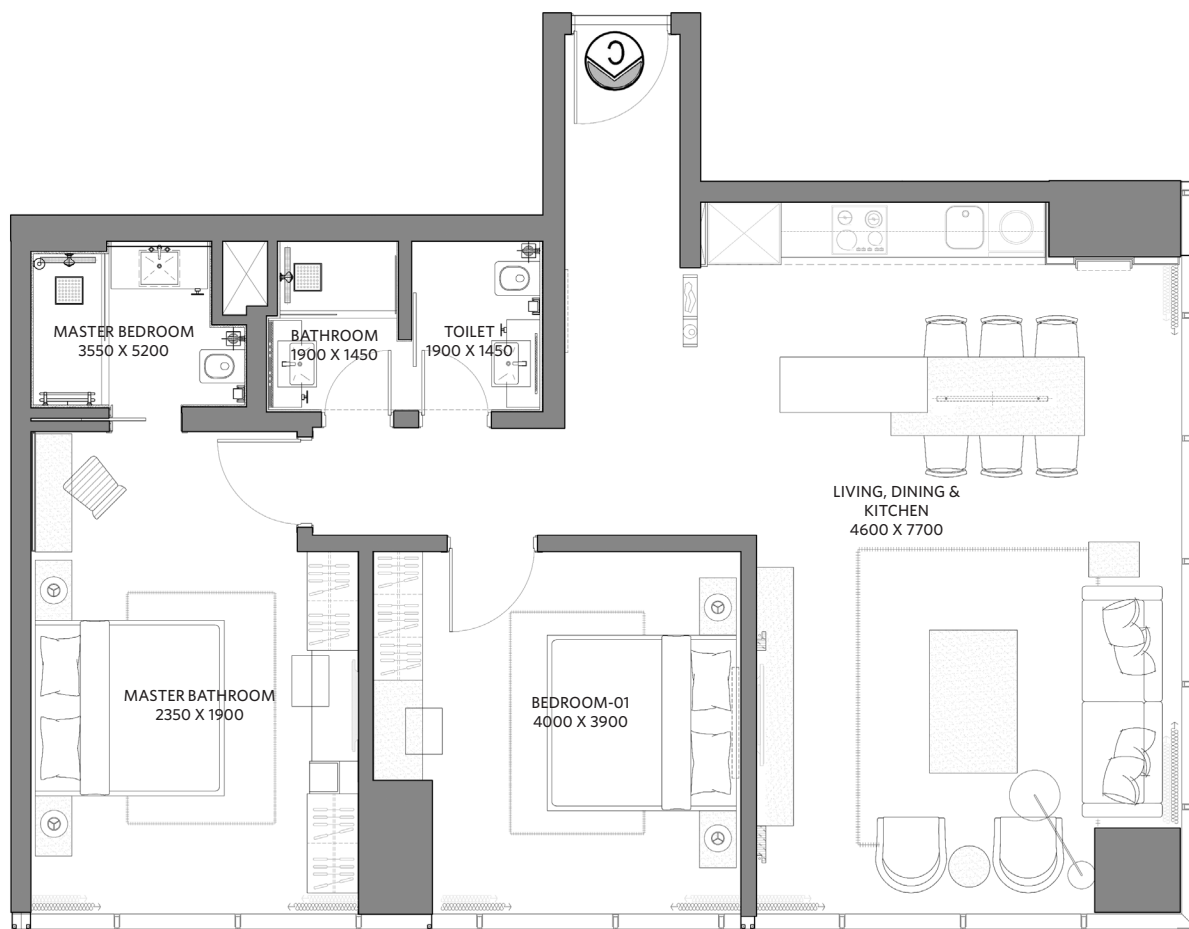


LIVE IN
ABSOLUTE
COMFORT
& INFINITE
DELIGHT



TYPE C

Two bedrooms apartment 'C'



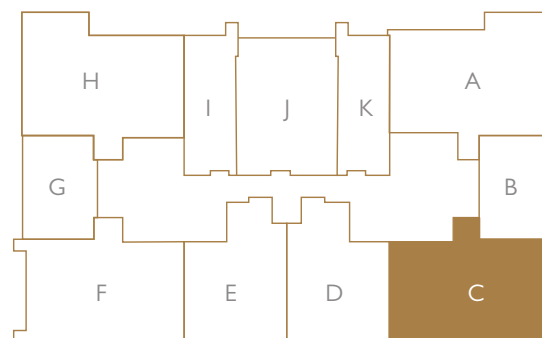
Total built-up area 103 m²
 Balcony area N/A

KEYPLAN

APPROXIMATE APARTMENT SIZE (mm)

Living, Dining & Kitchen	4600 x 7700
Bedroom 1	4000 x 3900
Bath 1	1900 x 1450
Bedroom 2	3550 x 5200
Bath 2	2350 x 1900
Toilet	1900 x 1450

Scale

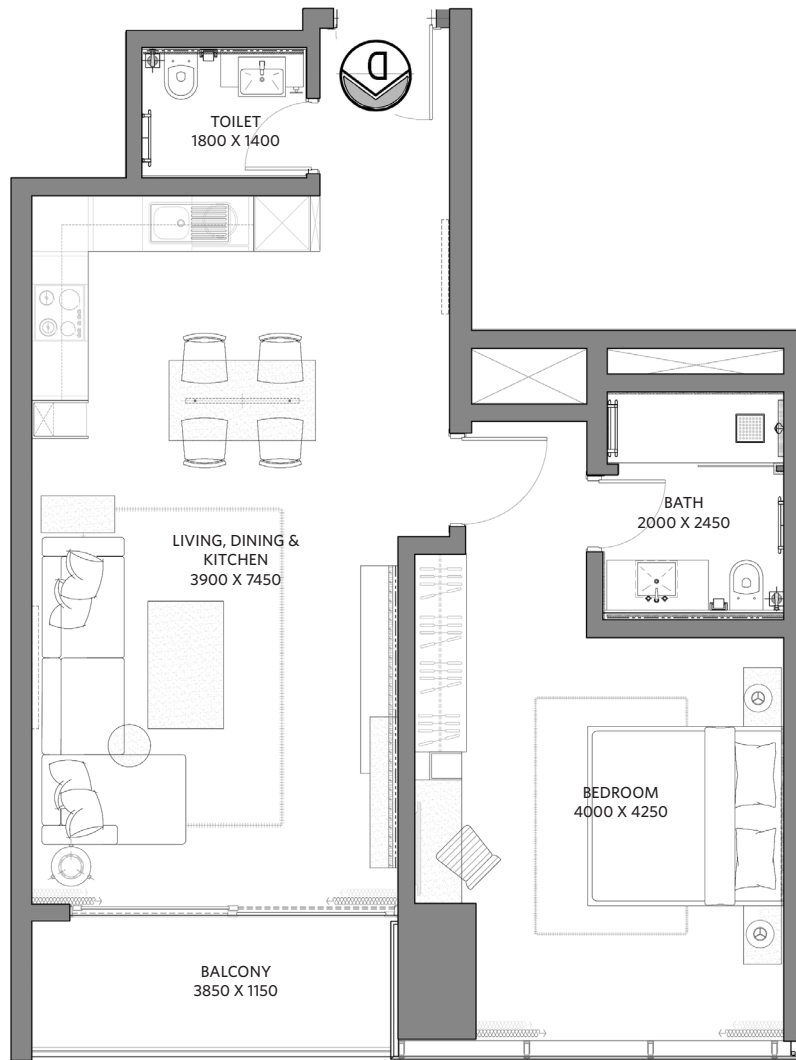


A PRIME LOCATION
WITH INFINITE
POSSIBILITIES



TYPE D

One bedroom apartment 'D'



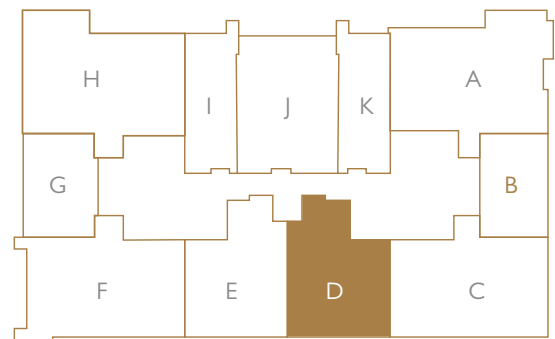
Total built-up area 76.5 m²
 Balcony area 5.2 m²

KEYPLAN

APPROXIMATE APARTMENT SIZE (mm)

Living, Dining & Kitchen 3900 x 7450
 Bedroom 4000 x 4250
 Bath 2000 x 2450
 Toilet 1800 x 1400

Scale



SHIS
LINE

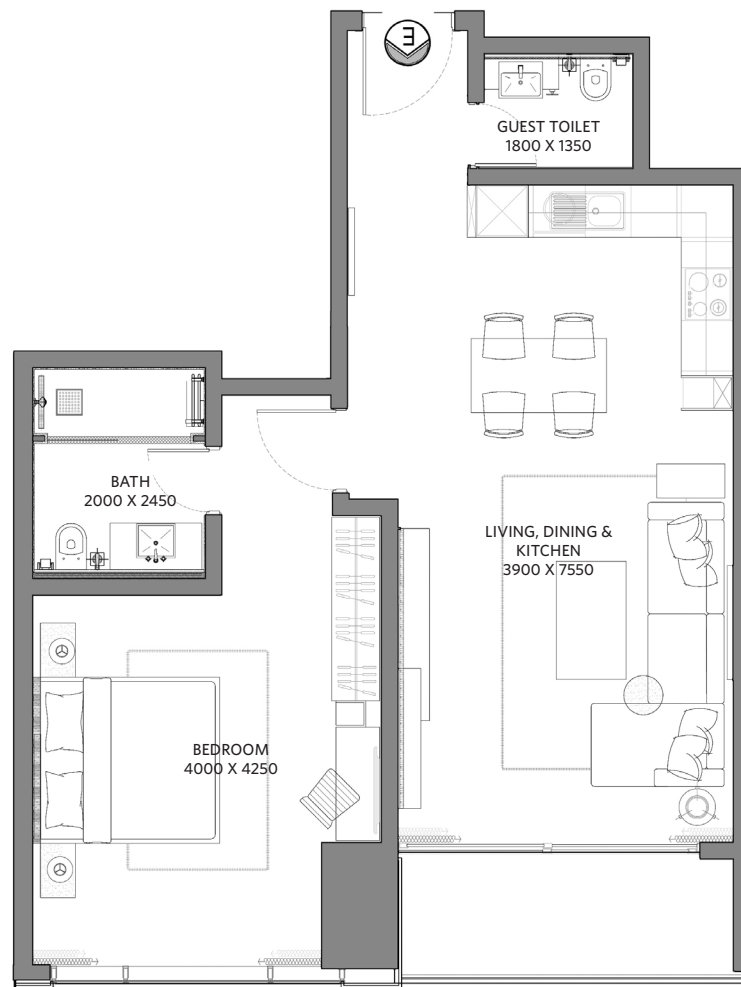


WORLD CLASS
GYM & SPA
FACILITIES

Glute Trainer

TYPE E

One bedroom apartment 'E'



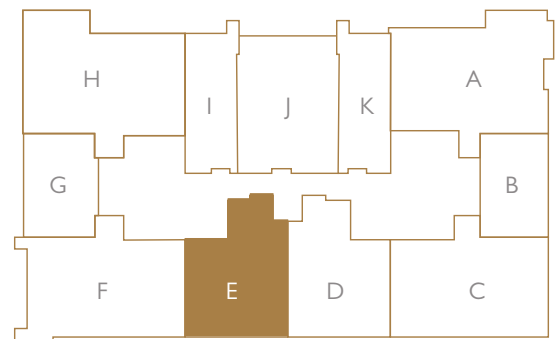
Total built-up area 73.5 m²
 Balcony area 4.6 m²

KEYPLAN

APPROXIMATE APARTMENT SIZE (mm)

Living Area, Dining & Kitchen 3900 x 7550
 Bedroom 4000 x 4250
 Bath 2000 x 2450
 Guest Toilet 1800 x 1350

Scale





REDEFINING
LEISURE IN
RESIDENTIAL
TOWERS

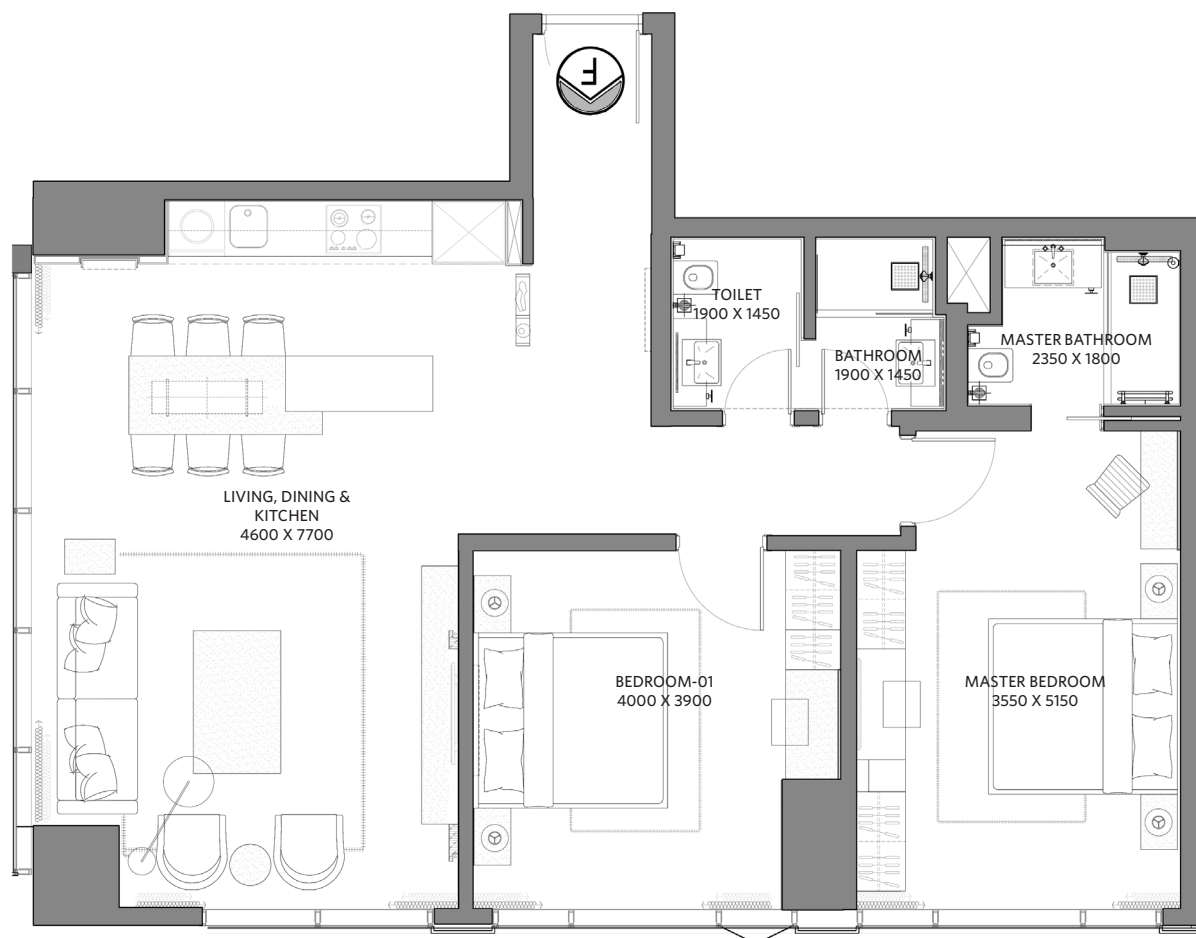


FUN & GAMES FOR ALL THE FAMILY



TYPE F

Two bedrooms apartment 'F'



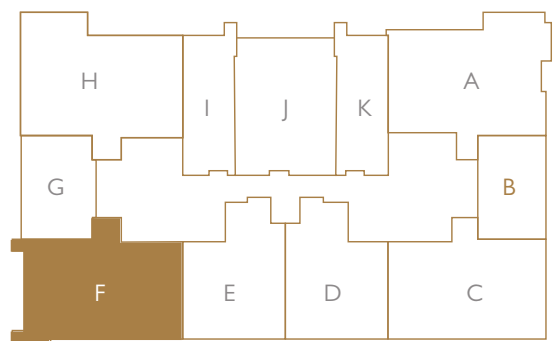
Total built-up area 104 m²
 Balcony area N/A

KEYPLAN

APPROXIMATE APARTMENT SIZE (mm)

Living, Dining & Kitchen	4600 x 7700
Bedroom 1	4000 x 3900
Bath 1	1900 x 1450
Bedroom 2	3550 x 5150
Bath 2	2350 x 1800
Toilet	1900 x 1450

Scale

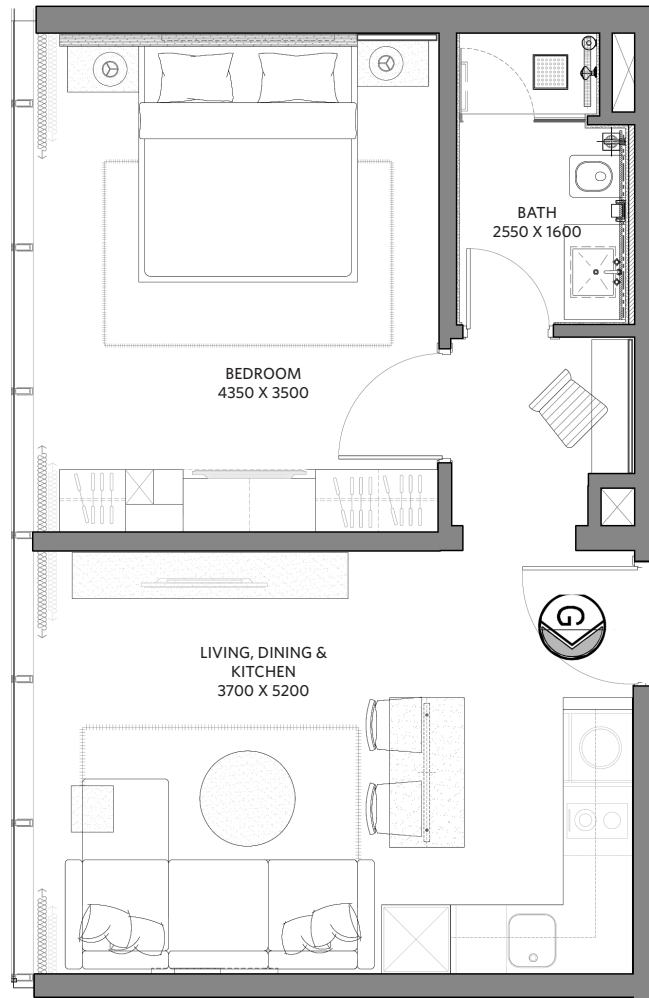


A man with a beard, wearing an orange tank top and light blue shorts, is paddling a bright yellow kayak on a vibrant blue lazy river. The river is set within a modern residential complex, with a multi-story building featuring large glass windows and balconies in the background. The area is landscaped with palm trees, green shrubs, and concrete walkways. In the foreground, a metal handrail is visible on the left side of the river. The overall scene is bright and sunny, suggesting a pleasant day.

FIRST UNIQUE
LAZY RIVER IN
RESIDENTIAL
TOWERS

TYPE G

One bedroom apartment 'G'



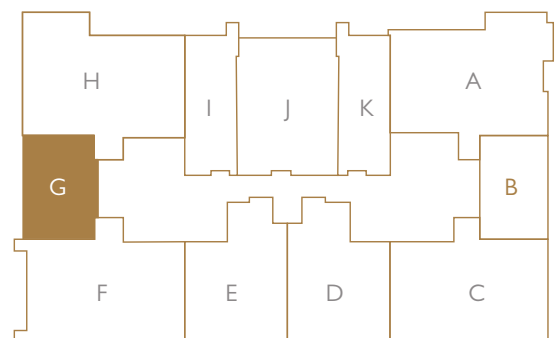
Total built-up area 46.80 m²
 Balcony area N/A

KEYPLAN

APPROXIMATE APARTMENT SIZE (mm)

Living, Dining & Kitchen 3700 x 5200
 Bedroom 4350 x 3500
 Bath 2550 x 1600

Scale

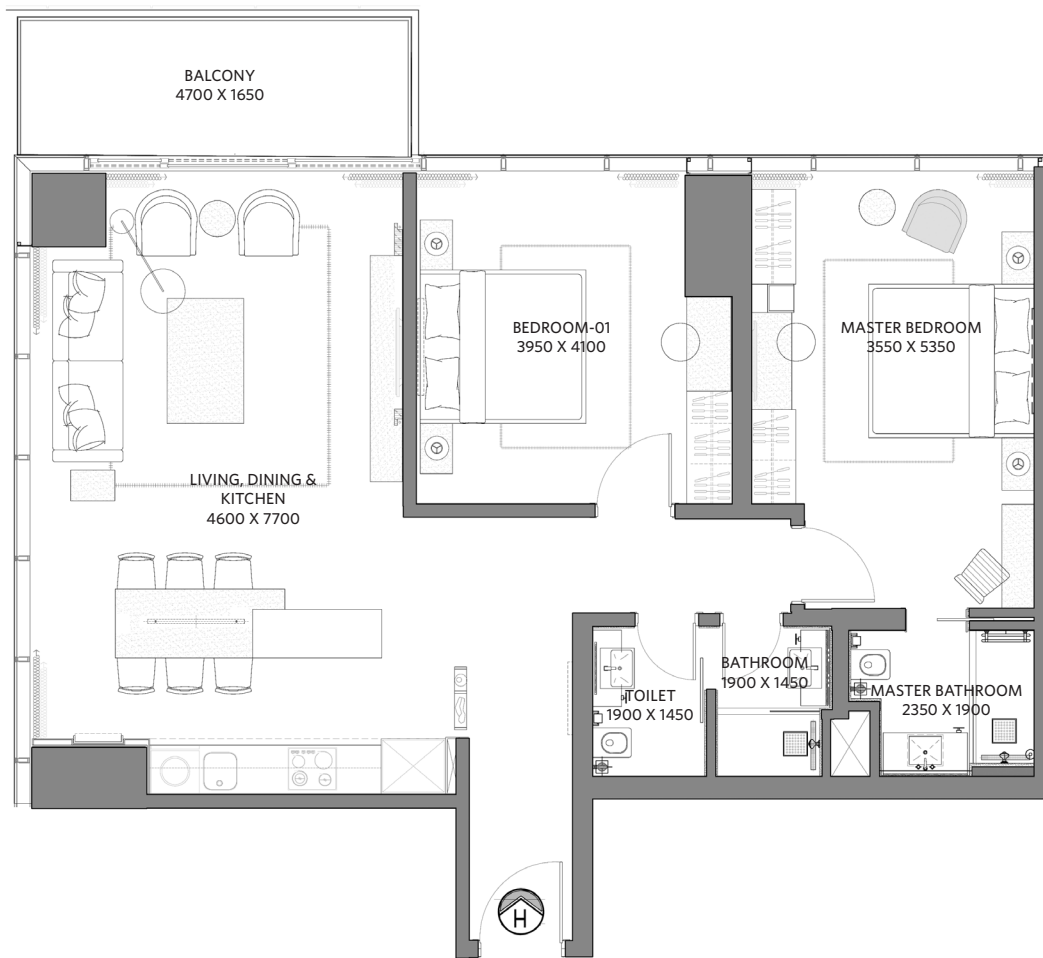




UNIQUE &
LUSH
TROPICAL
GARDENS

TYPE H

Two bedrooms apartment 'H'



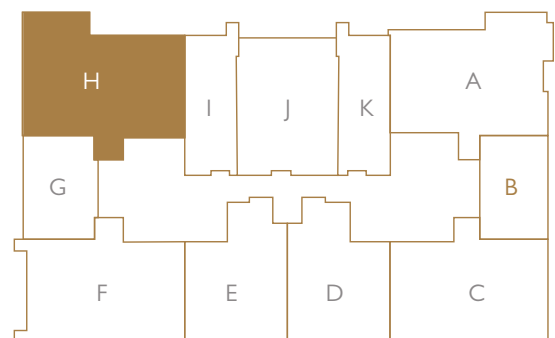
Total built-up area 111 m²
 Balcony area 8.9 m²

KEYPLAN

APPROXIMATE APARTMENT SIZE (mm)

Living, Dining & Kitchen 4600 x 7700
 Bedroom 1 3950 x 4100
 Bath 1 1900 x 1450
 Bedroom 2 3550 x 5350
 Bath 2 2350 x 1900
 Toilet 1900 x 1450

Scale

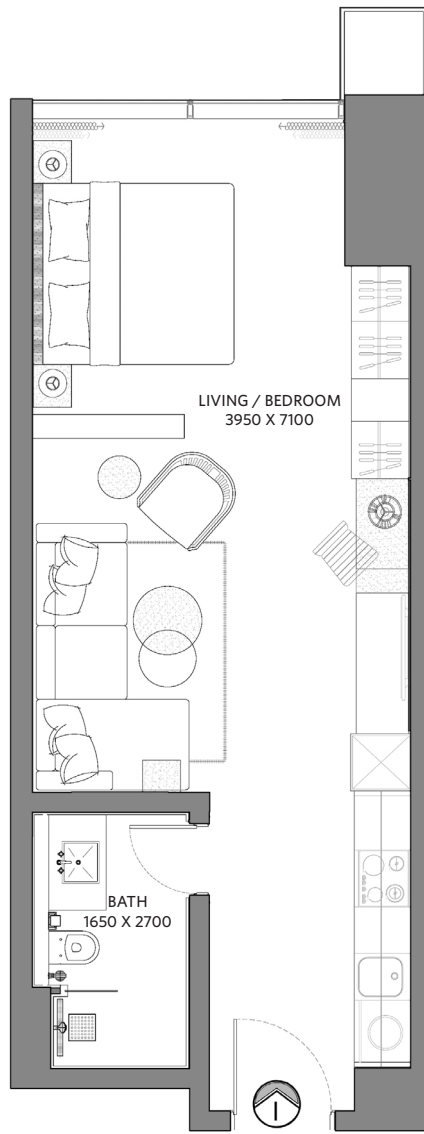




CRAFTED
WITH FINESSE

TYPE I

Studio apartment 'I'



Total built-up area 45 m²

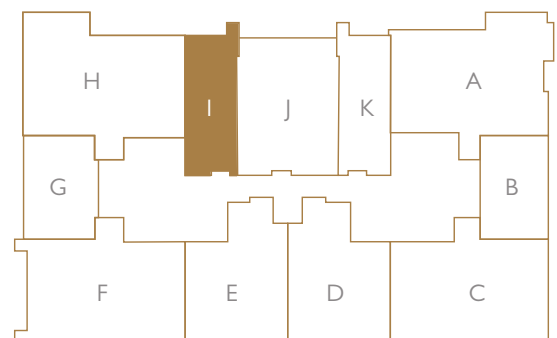
KEYPLAN

APPROXIMATE APARTMENT SIZE (mm)

Living / Bedroom 3950 x 7100

Bath 1650 x 2700

Scale

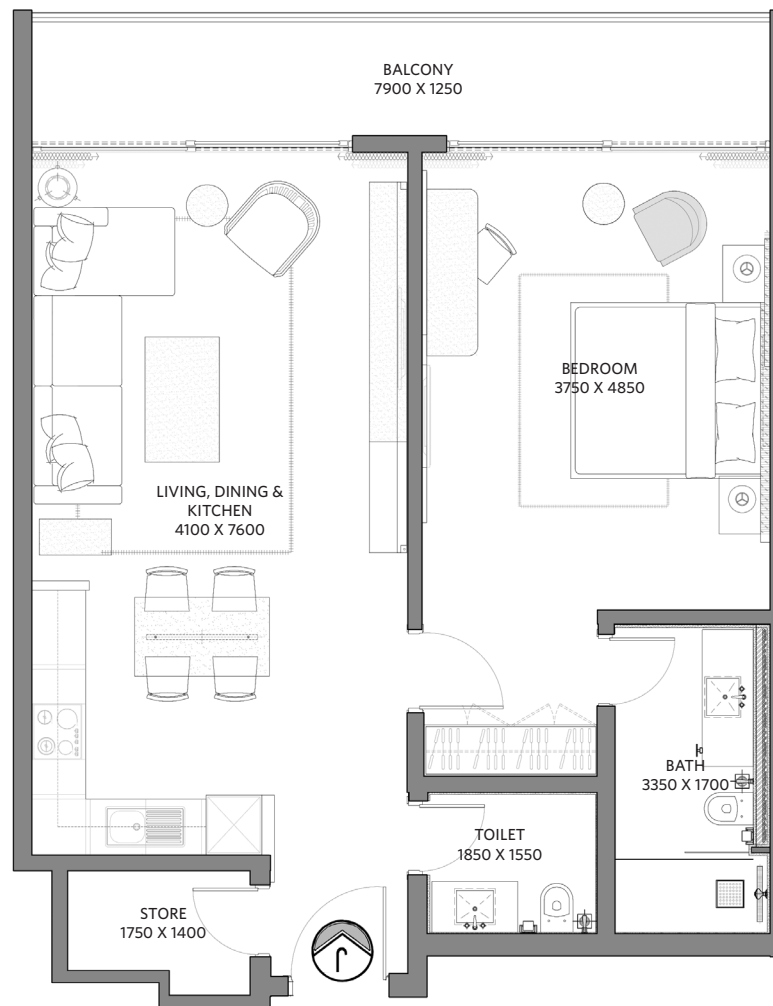




UNIQUE, CHILDREN'S
OUTDOOR PLAY AREA

TYPE J

One bedroom apartment 'J'



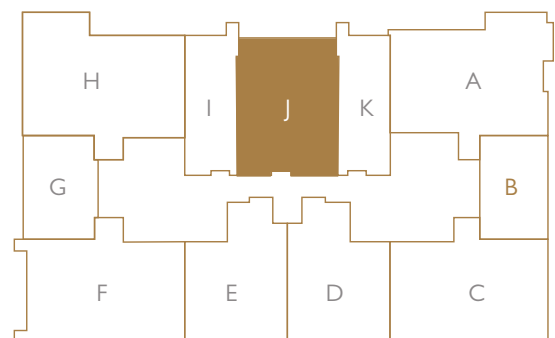
Total built-up area 85.5 m²
 Balcony area 11.7 m²

KEYPLAN

APPROXIMATE APARTMENT SIZE (mm)

Living, Dining & Kitchen 4100 x 7600
 Bedroom 3750 x 4850
 Bath 3350 x 1700
 Toilet 1850 x 1550
 Store 1750 x 1400

Scale



WORLD CLASS RESORT AMENITIES



TYPE K

Studio apartment 'K'

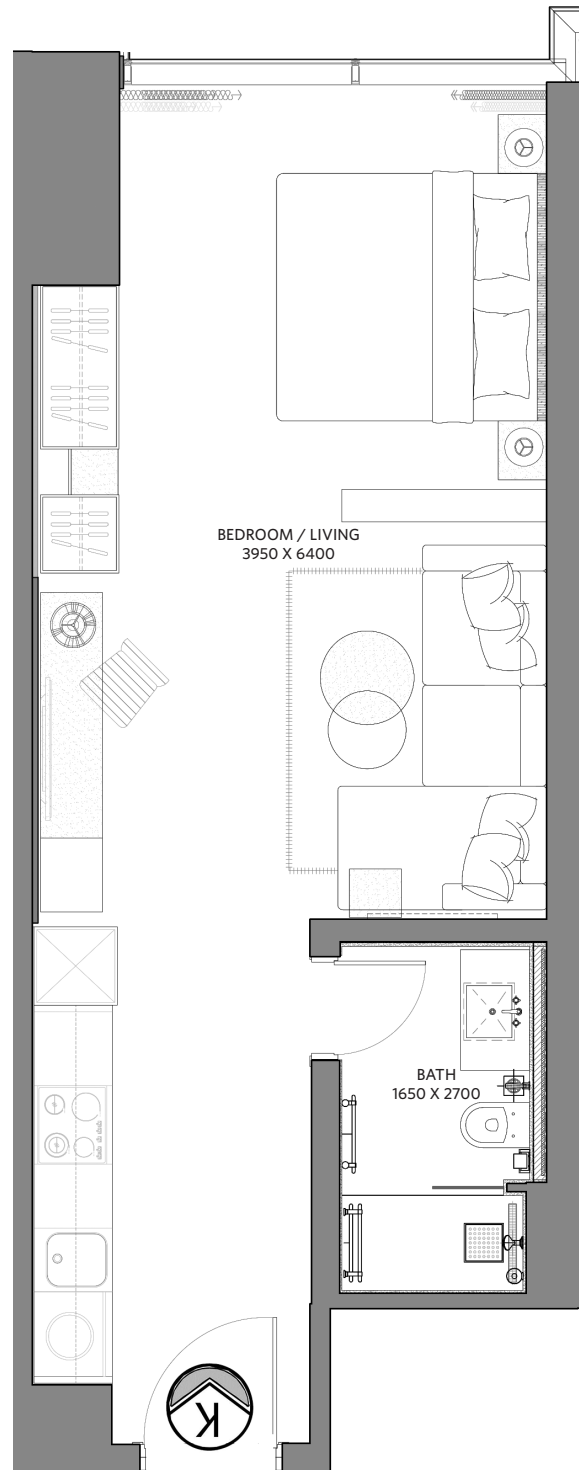
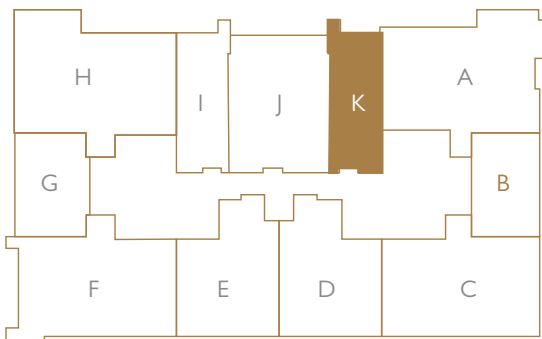
KEYPLAN

Total built-up area44.75 m²
Balcony area N/A

APPROXIMATE APARTMENT SIZE (mm)

Bedroom / Living 3950 x 6400
Bath 1650 x 2700

Scale



FONTANAINFINITY.COM



Building 4686, Road 2468, Juffair 324, Bahrain
Phone: (+973) 1600 0061
sales@rabahrain.com
www.royalambassadorbh.com

