

Spring Hill



.....

Established in 1973, Kooheji Contractors has over 45 years of experience as a leader in providing construction, civil engineering and design services to customers in Bahrain and throughout the MENA region. We give each project a commitment of customer satisfaction, quality and outstanding performance. Our construction experience expands across a variety of industries from urban development to commercial and industrial projects. Our projects are located in every area of the country, we contribute to growing quality of community life in affordable housing projects, seaside communities, luxury high-rise living and more.



ROYAL AMBASSADOR

HOSPITALITY

.....

Royal Ambassador is a full-service long-stay hospitality company driven by an unmatched commitment to quality and innovation. Led by a team of industry leading professionals whose combined breadth of experience includes all areas of finance, hospitality, real estate marketing & development, property and facility management, Royal Ambassador success story includes some of the most iconic luxury residential developments in the Kingdom of Bahrain.

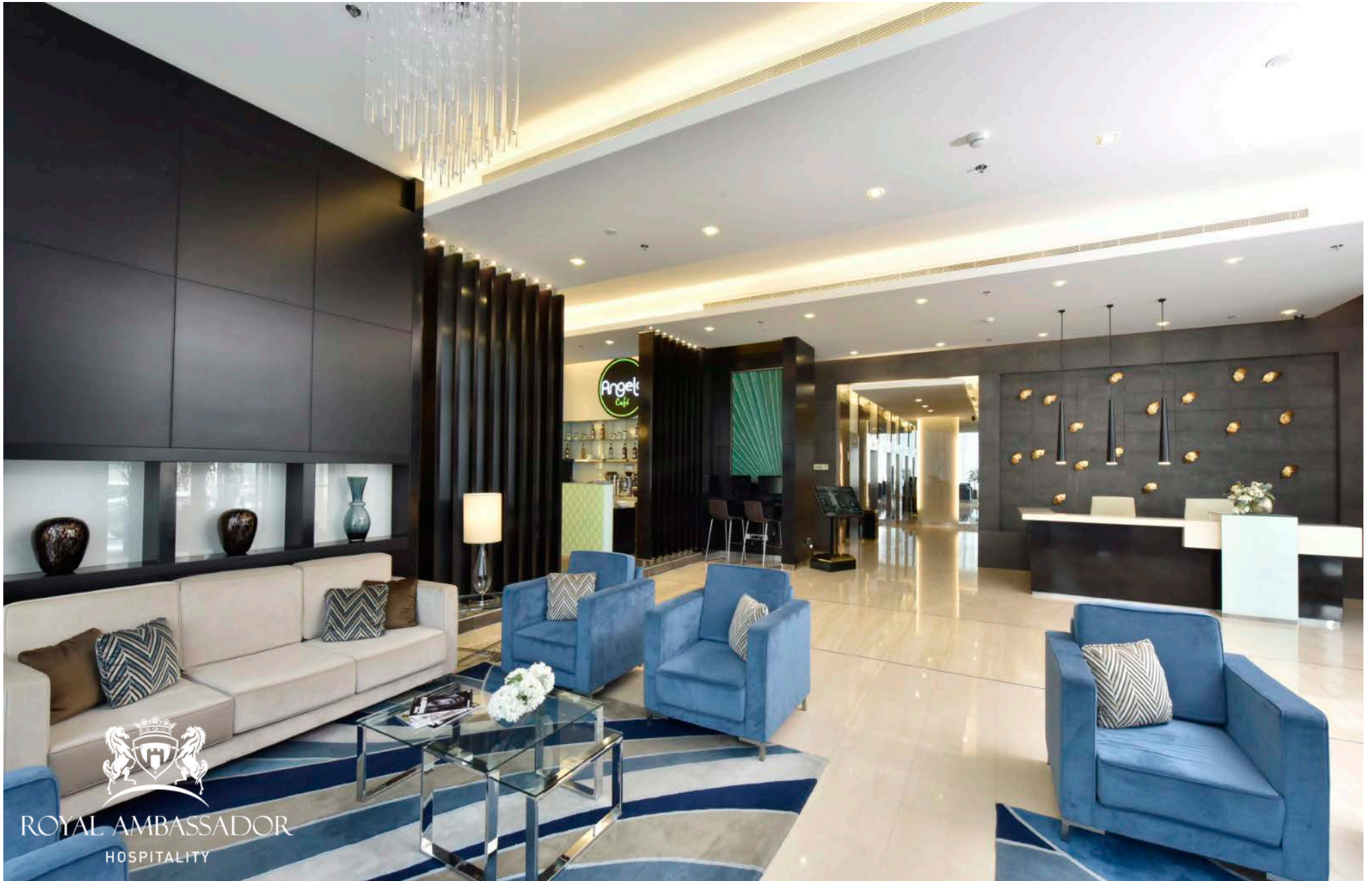
Spring Hill

.....

Spring Hill 2 is a collection of 104 elegantly appointed studio, one and two bedroom apartments residences in Juffair. The modern architecture design is crafted with oversized windows, high ceilings, gracious floor plans, and the finest finishes. Spring Hill 2 is the ideal choice for couples and small families seeking a trendy and sophisticated.







ROYAL AMBASSADOR
HOSPITALITY



ROYAL AMBASSADOR
HOSPITALITY



ROYAL AMBASSADOR
HOSPITALITY



ROYAL AMBASSADOR
HOSPITALITY



ROYAL AMBASSADOR
HOSPITALITY



ROYAL AMBASSADOR
HOSPITALITY



ROYAL AMBASSADOR
HOSPITALITY



ROYAL AMBASSADOR
HOSPITALITY



ROYAL AMBASSADOR
HOSPITALITY



ROYAL AMBASSADOR
HOSPITALITY



ROYAL AMBASSADOR
HOSPITALITY



ROYAL AMBASSADOR
HOSPITALITY



ROYAL AMBASSADOR
HOSPITALITY

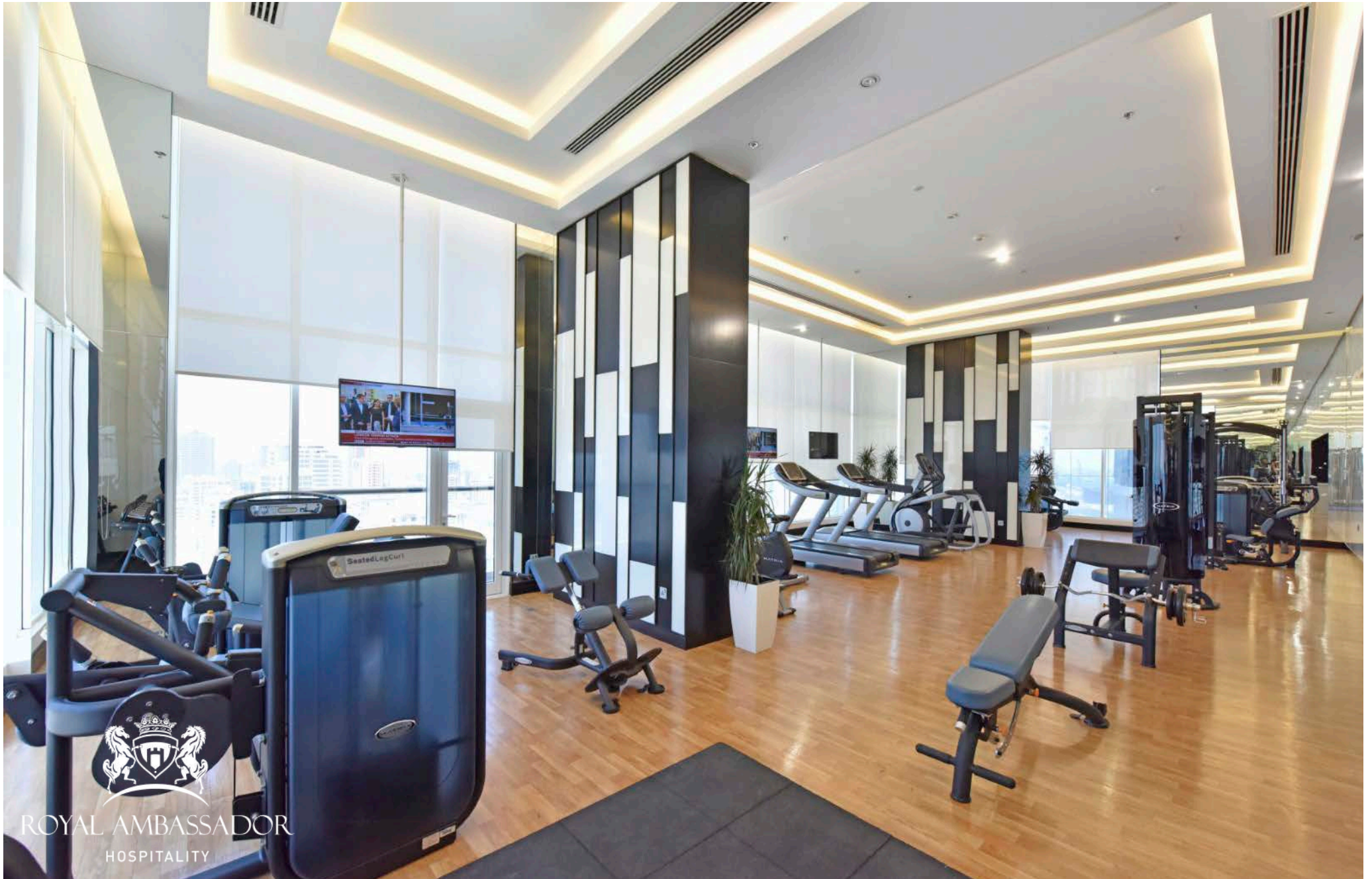


ROYAL AMBASSADOR
HOSPITALITY





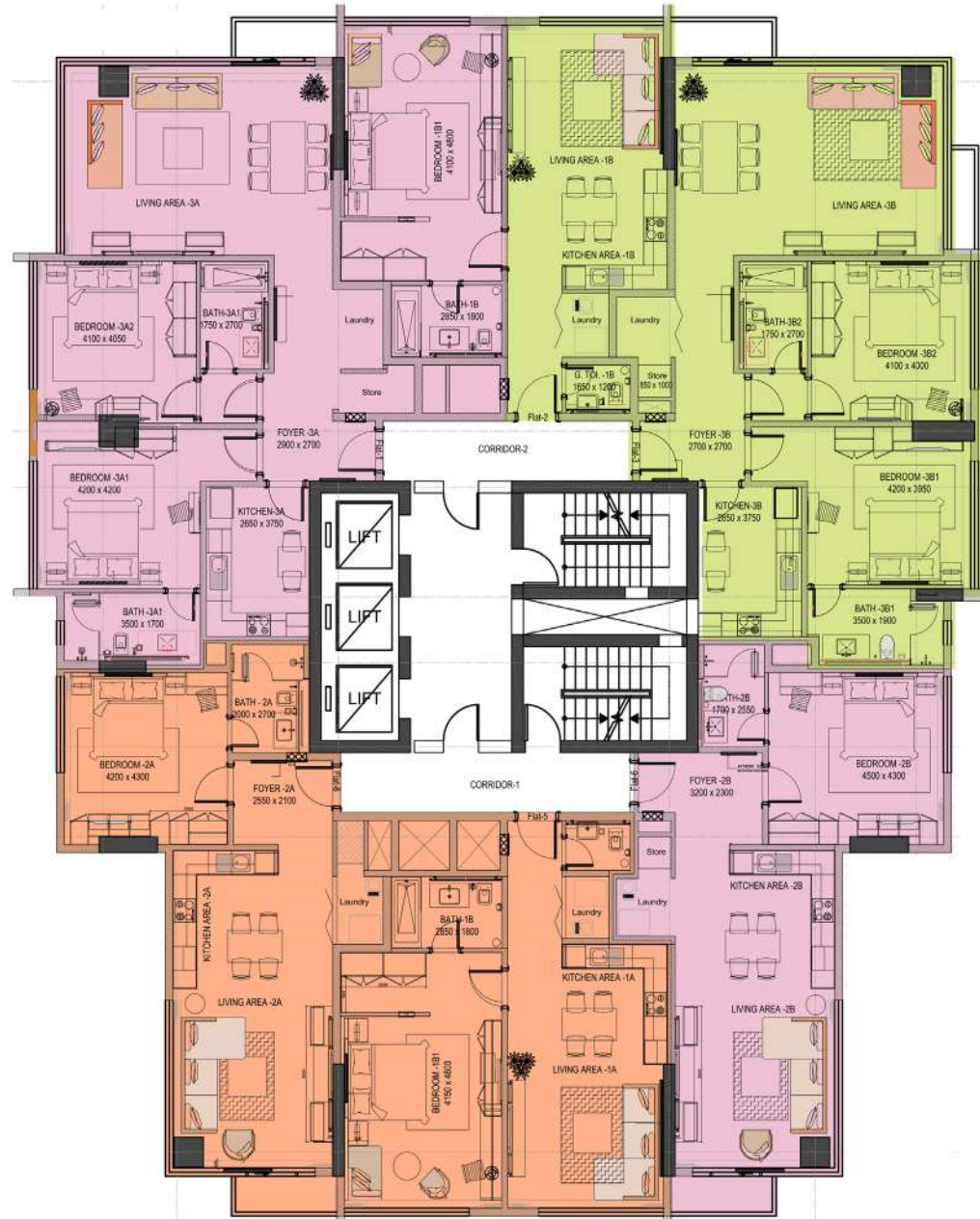




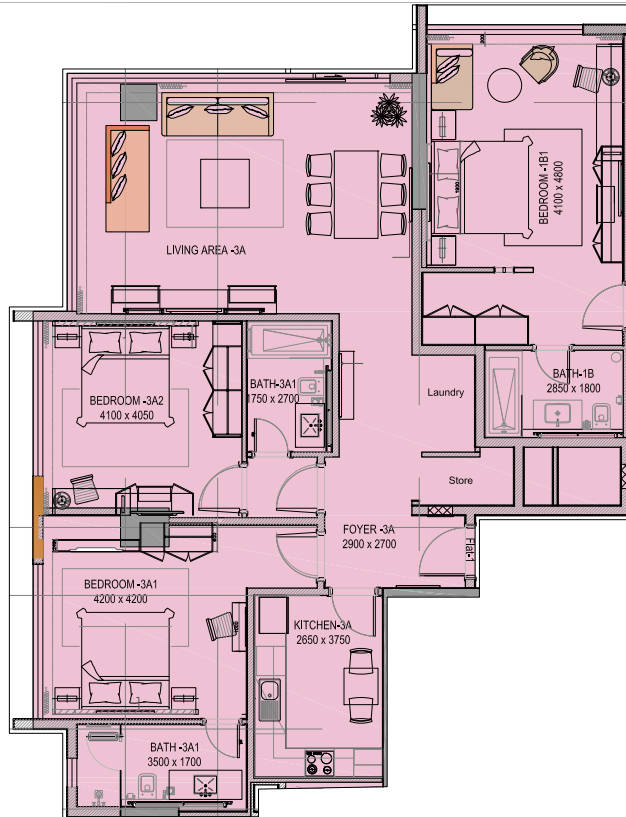
ROYAL AMBASSADOR
HOSPITALITY



ROYAL AMBASSADOR
HOSPITALITY

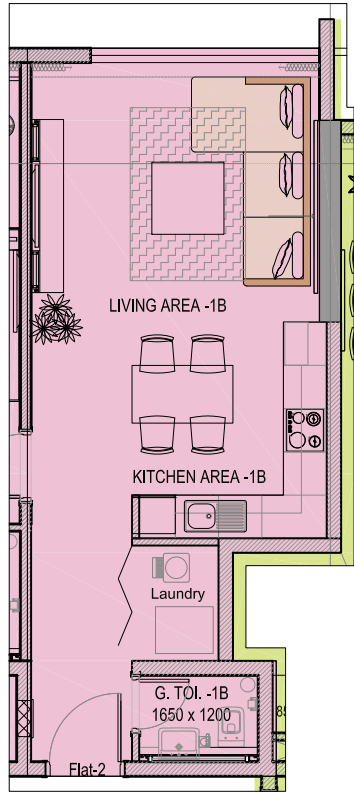


FLAT 1



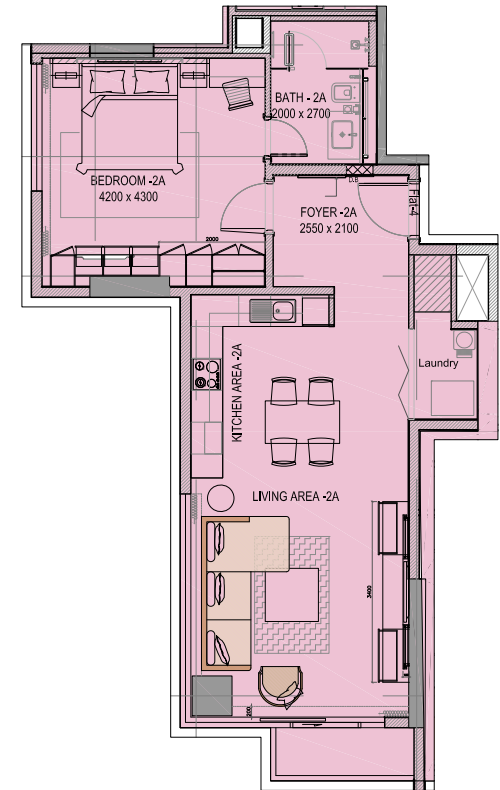
Total Area	117 SQM
Kitchen	2.65Mx3.75M
Bedroom-01	4.1Mx4.8M
Bedroom-02	4.1Mx4.05M
Bedroom-03	4.2Mx4.2M
Bathroom-01	2.85Mx1.8M
Bathroom-02	1.75Mx2.7M
Bathroom-03	3.5Mx1.7M
Laundry room	1.6Mx1.6M
Foyer	2.9Mx2.7M

FLAT 2



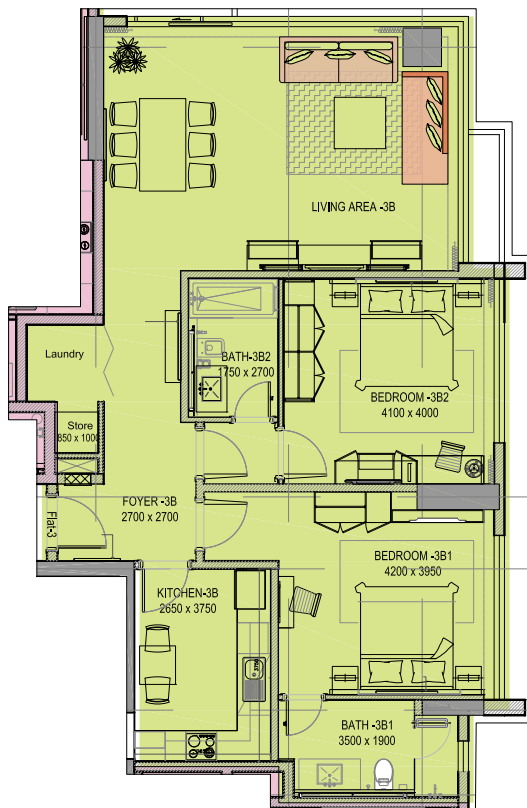
Total Area	40 SQM
Toilet	1.65Mx1.2M

FLAT 3



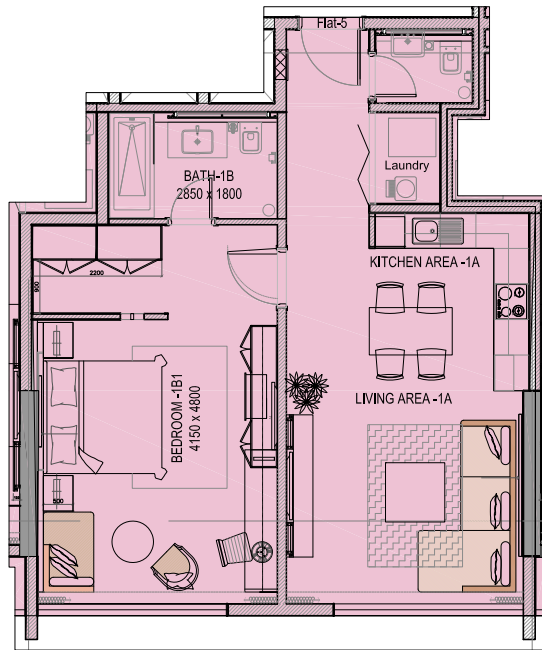
Total Area	73 SQM
Bedroom-01	4.2Mx4.3M
Bathroom-01	2Mx2.7M
Foyer	2.5Mx2.1M

FLAT 4



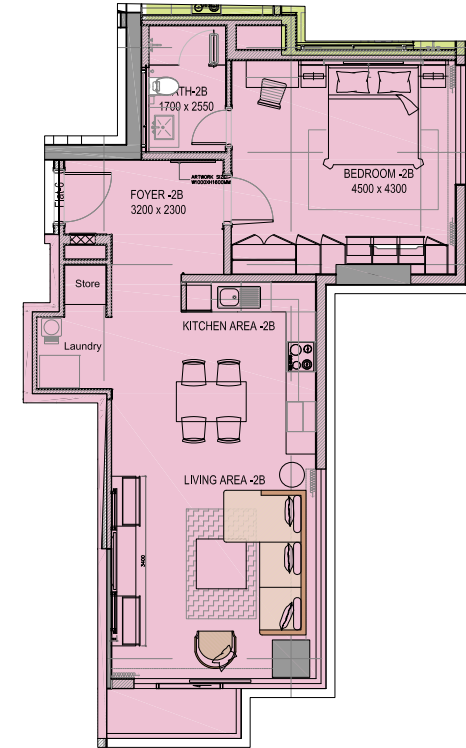
Total Area	114 SQM
Kitchen	2.65Mx3.75M
Bedroom-01	4.2Mx3.95M
Bedroom-02	4.1Mx4M
Bathroom-01	3.5Mx1.9M
Bathroom-02	1.75Mx2.7M
Store	.85Mx1M
Foyer	2.7Mx2.7M

FLAT 5



Total Area	76 SQM
Bedroom	4.15Mx4.8M
Bathroom	2.85Mx1.8M

FLAT 6



Total Area	74 SQM
Bedroom	4.5Mx4.3M
Bathroom	1.7Mx2.55M
Foyer	3.2Mx2.3M

THANK YOU!